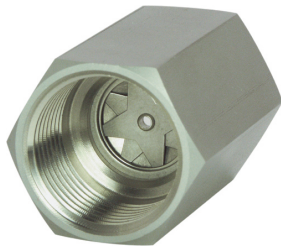


**Product Information**

**Flow limiter KM-...G**

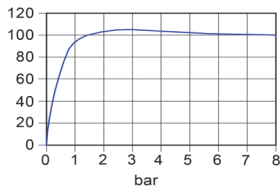


- Metal construction
- Installation location as desired
- No need for auxiliary power

**Characteristics**

The constant flow is created by two crossways stainless steel spring plates which close or open an annular gap located behind them to a greater or lesser degree, according to the flow value.

Flow value%  
of controlled value

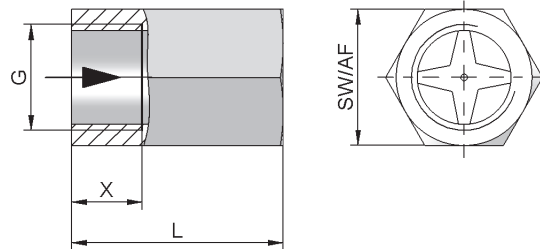


**Technical data**

|  |   |       |  |            |
|--|---|-------|--|------------|
| <b>Nominal width</b>                         | DN 15..20   |       |  |            |
| <b>Process connection</b>                    | female thread G 1/2..G 3/4  |       |  |            |
| <b>Controlled values</b><br><b>Tolerance</b> | Controlled value  | G 1/2 | G 3/4  | Tolerance  |
|  | 1 l/min   | ●     |  | ±0.2 l/min |
|  | 2 l/min   | ●     |  | ±0.2 l/min |
|  | 3 l/min   | ●     |  | ±0.4 l/min |
|  | 4 l/min   | ●     | ●  | ±0.4 l/min |
|  | 6 l/min   | ●     | ●  | ±0.5 l/min |
|  | 8 l/min   | ●     | ●  | ±0.5 l/min |
|  | 10 l/min  | ●     | ●  | ±0.7 l/min |
|  | 12 l/min  | ●     | ●  | ±0.7 l/min |
|  | 16 l/min  | ●     | ●  | ±1.2 l/min |
|  | 20 l/min  |       | ●  | ±1.2 l/min |
|  | 25 l/min  |       | ●  | ±1.5 l/min |
|  | 30 l/min  |       | ●  | ±1.5 l/min |
| <b>Differential pressure</b>                 | 1.5..10 bar   |       |  |            |
| <b>Pressure resistance</b>                   | PS 200 bar  |       |  |            |
| <b>Media temperature</b>                     | 0..300 °C   |       |  |            |
| <b>Ambient temperature</b>                   | 0..300 °C   |       |  |            |
| <b>Medium</b>                                | water, viscous media up to 30 mm <sup>2</sup> /s                  |       |  |            |
| <b>Materials medium-contact</b>              | <i>Brass construction:</i><br>CW614N nickelled,<br>1.4310, 1.4122 |       | <i>Stainless steel construction:</i> 1.4301,<br>1.4310, 1.4122 |            |
|  | see table "Dimensions and weights"                                |       |  |            |
| <b>Weight</b>                                | see table "Dimensions and weights"                                |       |  |            |
| <b>Installation location</b>                 | as desired  |       |  |            |

**Dimensions and weights**

| G     | Nominal width | Type     | L  | SW | X  | Weight kg |
|-------|---------------|----------|----|----|----|-----------|
| G 1/2 | DN 15         | KM-015G. | 40 | 27 | 14 | 0.13      |
| G 3/4 | DN 20         | KM-020G. | 50 | 36 | 16 | 0.30      |



**Ordering code**

KM -  1.  2.  3.  4.   
**G**

For combination option, see table "Technical data"

| 1. Nominal width                     |                 |     |
|--------------------------------------|-----------------|-----|
| 015                                  | DN 15 - G 1/2   |     |
| 020                                  | DN 20 - G 3/4   |     |
| 2. Process connection                |                 |     |
| G                                    | female thread   |     |
| 3. Connection material               |                 |     |
| M                                    | brass           |     |
| K                                    | stainless steel |     |
| 4. Controlled value H <sub>2</sub> O |                 |     |
| 001                                  | 1 l/min         | ●   |
| 002                                  | 2 l/min         | ●   |
| 003                                  | 3 l/min         | ●   |
| 004                                  | 4 l/min         | ● ● |
| 006                                  | 6 l/min         | ● ● |
| 008                                  | 8 l/min         | ● ● |
| 010                                  | 10 l/min        | ● ● |
| 012                                  | 12 l/min        | ● ● |
| 016                                  | 16 l/min        | ● ● |
| 020                                  | 20 l/min        | ●   |
| 025                                  | 25 l/min        | ●   |
| 030                                  | 30 l/min        | ●   |

**Options**

- Inlet side, female thread / outlet side male thread
- Special values
- Selection

**Ordering information**

- Specify direction of flow, medium, and controlled value.
- For viscous media specify viscosity, temperature, and medium (e.g. ISO VG 10) (enquire about controlled value).